

No cleaning task is too much for this professional surface cleaner. Clean large areas like gas stations, parking lots, airport hangars and school yards. Industrial strength insures longevity.

The series features four 100mm stainless steel, rubber treaded castors, a reinforced 520/750mm stainless steel deck and a specially engineered high rpm swivel which guarantees long lasting operation under tough conditions.



Inlet : G3/8" F
 Pressure : 275 bar
 Temperature : 120°C



FL-PH 750



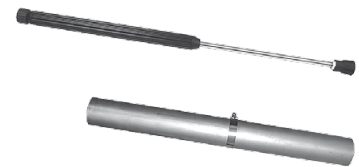
FL-PH 520

Name	Part No.	ø	Weight	Swivel	Rotor Arm	Lance Nozzles	Rotor Nozzles	HP-Gun	Stainless Steel Castor
FL-PH 520	80.754	520	16.2kg	1x DYCI	2x 1/8" NPTF	1x 1506	2x 1503	1x	4x ø 100
FL-PH 750	80.755	750	22.5kg	1x DYCI	3x 1/8" NPTF	1x 1508	3x 1503	1x	4x ø 100

FEATURES

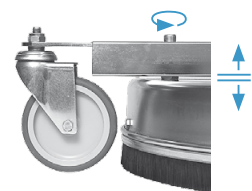
Two Tools In One

The 760mm spray lance (wand) quick connects to the existing HP-gun. Always handy, this lance (wand) is ideal for cleaning out corners and other hard to reach areas, allowing you to go where your surface cleaner cannot.



Height Adjustable

Stainless steel guard for extra strength and stability. Efficient cleaning with adjustable housing.



Premium Quality

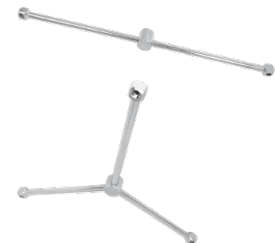
Four 100mm stainless steel castors with custom mounting brackets ensure easy maneuvering even in tight spaces.

Stainless Steel Castor

Part No. 80.956

High Pressure Rotor Arms

Both styles can withstand up to 275 bar, are precision welded and balanced.



2cw2 (2 Arms / 2 Nozzles)

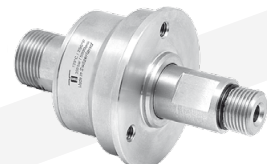
Part No. 82.942 (diameter 470mm)

3cw3 (3 Arms / 3 Nozzles)

Part No. 82.943 (diameter 700mm)

Swiss Engineering

High rpm stainless steel swivel features reinforced self lubricated stainless steel ball bearings for improved performance. The dual spring based carbide seal system, guarantees long lasting operation.



DYCI Swivel

Part No. 55.253